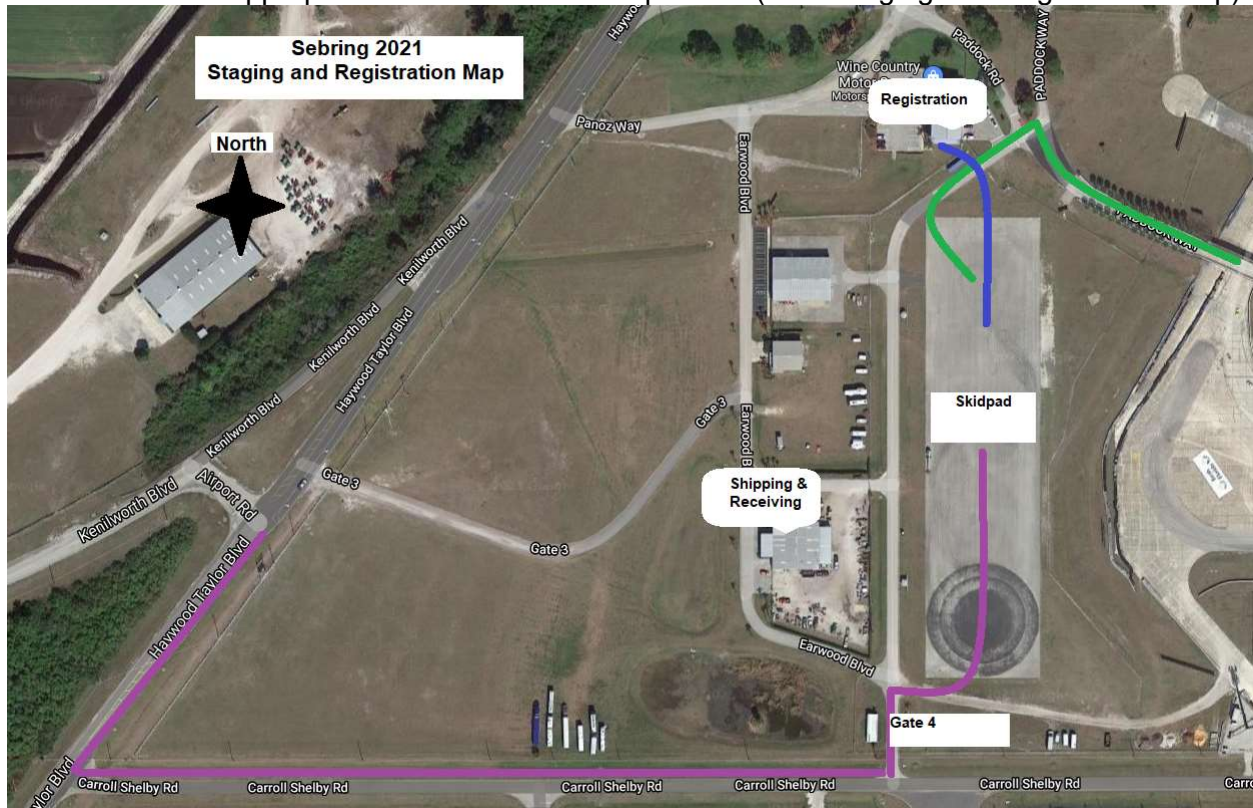


Sebring 2021 Competitor Load-In

- Staging:

- All rigs must enter through Gate 4 off of Carroll Shelby Blvd and stage in the appropriate lane. Follow the Purple Line (See “Staging and Registration” map):



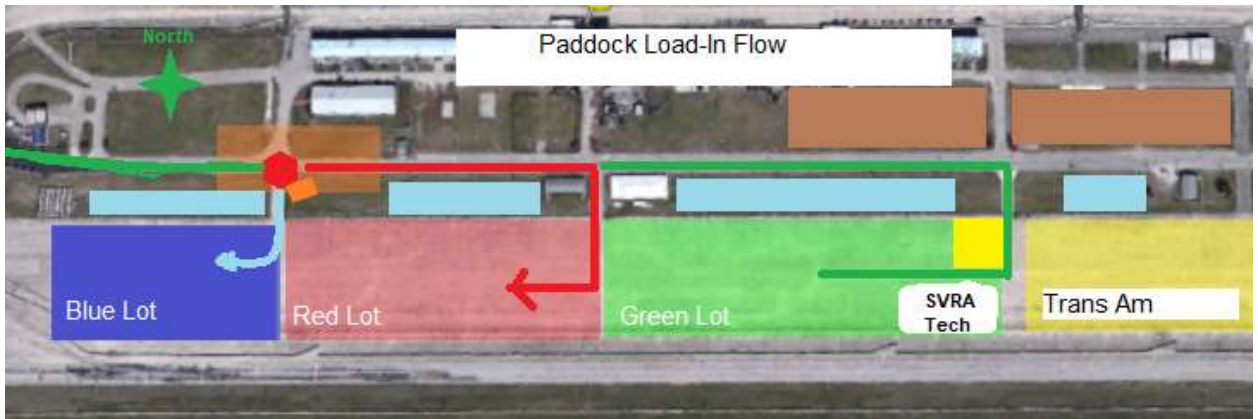
- Follow the feather flags:
 - SVRA and TA Tech Trailers, Vendor and prep shops
 - Long rigs including approved Trans Am (XGT, SGT, GT) teams testing with SVRA
 - IGT
 - Short trailers
- If you want to paddock together, please arrive in the staging lanes together.
- **Once you are in the staging lanes, please proceed to registration. Go to the front of the skidpad and then through the gate. It is a shorter walk than from the Midway (Follow the Blue Line).**
- Registration and load-in for SVRA will begin at 1:00pm on Wednesday, and Registration will close at 5:00 pm. We will continue load-in until 5:30 pm.
- Trans Am will load-in on Thursday from 9:00 am to 11:00 am then again Friday 7:00 am to 8:00 am.
- We will start Load-In about 1p on Wednesday. See “Paddock Load-In Flow” map.

Load-In will start with the Tech trailers and vendor rigs

Long Rigs and IGT

Then Short Rigs

An SVRA official will be at the head of the staging lanes to release rigs as requested from inside officials (Follow the Green Line).



Please review the maps and have an idea where you would like to paddock so that you can notify the official, Blue (Grid end), Red, Green lots or one of the grass lots (Brown). Trans Am is in the Yellow lot. Light Blue are the RV spots.

- Rigs will proceed across the bridge.
- After the bridge at the first intersection, there will be an SVRA official directing traffic.
- Teams who want to paddock at the Blue Lot (Grid end, west) may turn into the paddock at the first stop sign. An SVRA paddock marshal should pick them up there and park them.
- Teams wanting to paddock in the Red Lot (center of the paddock) may turn in at the second stop sign. An SVRA paddock marshal should pick them up and park them.
- Teams wanting to park in the Green Lot will want to go all the way to the end stop sign and turn in there. An SVRA paddock marshal should pick them up and park them.
- Garage style (three or more cars under the same tent) parking **MUST** be approved by Will Huxtable or Alex Miller before stopping.

• **Thursday and Friday Load In:**

- Registration 7:00 am to 5:00 pm.
- All rigs must enter through Gate 4 off of Carroll Shelby Blvd and stage in the LEFT lane. Follow the Purple Line (See “Staging and Registration” map above).
- **Once you are in the staging lanes please proceed to registration. Go to the front of the skidpad and then through the gate. (Follow the Blue Line).**
- Will Huxtable will escort you into the paddock and help you get parked.

• **Coaches:**

- Our rule on coaches is, “If it towed the race trailer into the paddock, it can stay in the paddock”.
- All other coaches must park out on the grass between the cyclone fence and Alan Jay Blvd (light blue boxes).
- The power is first come first serve.

• Registration will not be issuing any spectator car passes. All crew team cars must park out in the grass along Alan Jay Blvd.

• Paddock speed is walking speed for cars and golf carts.

PLEASE keep your paddock inside the Fire Lanes.

• **Sonoco**

The fuel truck will be located at the far east end of the paddock. Please follow the Blue line (Alan Jay Blvd) on the below map . Please do not transit via the Trans Am paddock.

