



### **ORGANIZER INFORMATION**

**President:** Tony Parella – [tony@svra.com](mailto:tony@svra.com)  
**Vice President of Events:** Sydney Davis Yagel – [sydney@parellamotorsports.com](mailto:sydney@parellamotorsports.com)  
**Communications:** Ashleigh Aungst - [ashleigh@a2bstrategiesllc.com](mailto:ashleigh@a2bstrategiesllc.com)  
**Media:** Pam Shatraw – [pam@svra.com](mailto:pam@svra.com)  
**Registration:** Kathy Swinford – [kathy@svra.com](mailto:kathy@svra.com)  
**Paddock:** Jeff Luckritz – [jeff@svra.com](mailto:jeff@svra.com)  
**Series Admin:** Alex Miller – [alex@svra.com](mailto:alex@svra.com)

### **COVID-19 EVENT INFORMATION**

In light of the current pandemic situation, please be aware that Parella Motorsports Holdings, SVRA, Indianapolis Motor Speedway are not liable for any potential transmission of illnesses.

- Individuals with a confirmed infection or with a known exposure to an infected person within five days may not access the SpeedTour event. It is recommended that you obtain a negative test before attending events.
- State and local health department mandates regarding COVID-19 protocols will be adhered to during all SpeedTour events.
- If you experience symptoms during the event, you are encouraged to test and seek necessary medical assistance.
- All COVID-19 exposures and known infections must be reported within 24 hours via email to: [sydney@parellamotorsports.com](mailto:sydney@parellamotorsports.com).

### **TRACK WAIVER PROCESS**

*The preferred method is for participants to sign the waiver online before arriving, however, there will be paper waivers available at registration that may delay the check in process.*

**MINORS:** For attendees under 18 years of age, each parent/legal guardian will need to complete both releases and have them notarized before arrival. All completed waivers should be emailed to [kelly@parellamotorsports.com](mailto:kelly@parellamotorsports.com) and brought to registration. Upon turning in the original copy, the minor will receive a wristband to wear for the duration of the event to indicate the releases are complete.

[Minor Release Link](#)

**ADULTS:** Everyone else, over 18 years of age, will need to still complete the online waiver before arrival.

[Adult Release Link](#)

#### **Instructions for Completing the Release:**

1. Click on the above link & enter first and last name and mobile phone number
2. Once you receive a text, click on the link in the text to take you to the release platform
3. It will ask to allow access to your camera to take your photo, click allow and then take photo
4. Once the photo is taken it will ask you to sign your name at the bottom of each release
5. After signing both releases you will receive another confirmation text
6. Once onsite you will show your confirmation text at registration and receive a wristband to wear for the duration of the event to indicate the releases are complete

### **PIT VEHICLE RENTAL & REGISTRATION PROCESS**

Rental and private golf carts, tuggers, taylor duns, scooters, pit bikes, etc. (basically anything that is powered by battery or gas and not a race car or has a state issued license plate) must be registered through IMS.

**GOLF CART RENTALS:** [Willandale Golf Cart Sales](#)

#### **PIT VEHICLE REGISTRATION:**

##### **Instructions for Registering**

1. Go to the [IMS Golf Cart Application](#) and select Brickyard Vintage Racing Invitational
2. Complete the IMS Digital Liability Release that will come in a separate email when your application is approved.
3. Provide a Certificate of Insurance for a \$1,000,000 coverage via a separate email after your application is approved. A sample COI will be provided as the IMS legal department have very strict parameters. If you use their new digital platform through MyCOI it will work directly with your insurance provider so you don't have to worry about it. This is IMS's preferred option.
4. Once all the above is complete, you will receive a final email with instructions for how to submit the permit payment of \$25 per vehicle. This fee is separate than any fees paid to the rental golf cart company.

*For assistance with obtaining a COI for your pit vehicle(s), please contact Kathy: [kathy@svra.com](mailto:kathy@svra.com)*



### CIRCUIT DETAILS

<b>Circuit Information:</b>	Indianapolis Motor Speedway, 4790 West 16th Street, Indianapolis, IN 46222 <a href="http://www.indianapolismotorspeedway.com">www.indianapolismotorspeedway.com</a>   317-492-8500
<b>Length of Circuit/Turns:</b>	2.592-miles
<b>Race Direction:</b>	Clockwise
<b>Pole Position:</b>	Drivers Right
<b>Start &amp; Finish Line:</b>	Pit Straight
<b>Pit Lane Speed:</b>	40 mph. Determined by Pit Lane Speed Limit judges located in pit lane.
<b>Registration:</b>	All participants must visit the trailer located in the Polco/16 <sup>th</sup> Street Lot before accessing the facility
<b>Grid Location:</b>	Gasoline Alley
<b>Tech Location:</b>	Gasoline Alley Garages C1 & C32
<b>Race Control Location:</b>	Access by Invite Only – see SVRA staff
<b>Timing &amp; Scoring:</b>	Access by Invite Only – see SVRA staff
<b>Stewards' Office:</b>	Legends Row – A.J. Foyt
<b>Meeting Locations:</b>	Media Center
<b>Media Center:</b>	Legends Row – Wilbur Shaw
<b>Podium Ceremony:</b>	Pit Lane in front of the Pagoda
<b>Black Flag Locations:</b>	Turn 11 and Start/Finish
<b>Track Security:</b>	IMS Yellow Shirts
<b>Waste Disposal:</b>	Gasoline Alley Garage B9
<b>Shipping Address:</b>	SVRA Brickyard Vintage c/o Name & Cell Phone 2601 Georgetown Road Indianapolis, IN 46224
<b>Package Retrieval:</b>	Gasoline Alley Garage E2
<b>Pets:</b>	No pets allowed. Please leave them at home.
<b>Concessions:</b>	Thursday & Friday: Pagoda Grill for breakfast and lunch Saturday & Sunday: all concession areas for breakfast and lunch Please note that all vendors are cashless.
<b>Facility Restrictions:</b>	<a href="https://www.indianapolismotorspeedway.com/at-the-track/fan-policies">https://www.indianapolismotorspeedway.com/at-the-track/fan-policies</a>
<b>Track Emergency:</b>	Infield Care Center (Level 2)
<b>Trauma Hospital:</b>	Level 1: IU Health Methodist Hospital. 1701 N. Senate Ave., Indianapolis, IN 46202   317-962-2000

### PADDOCK INFORMATION

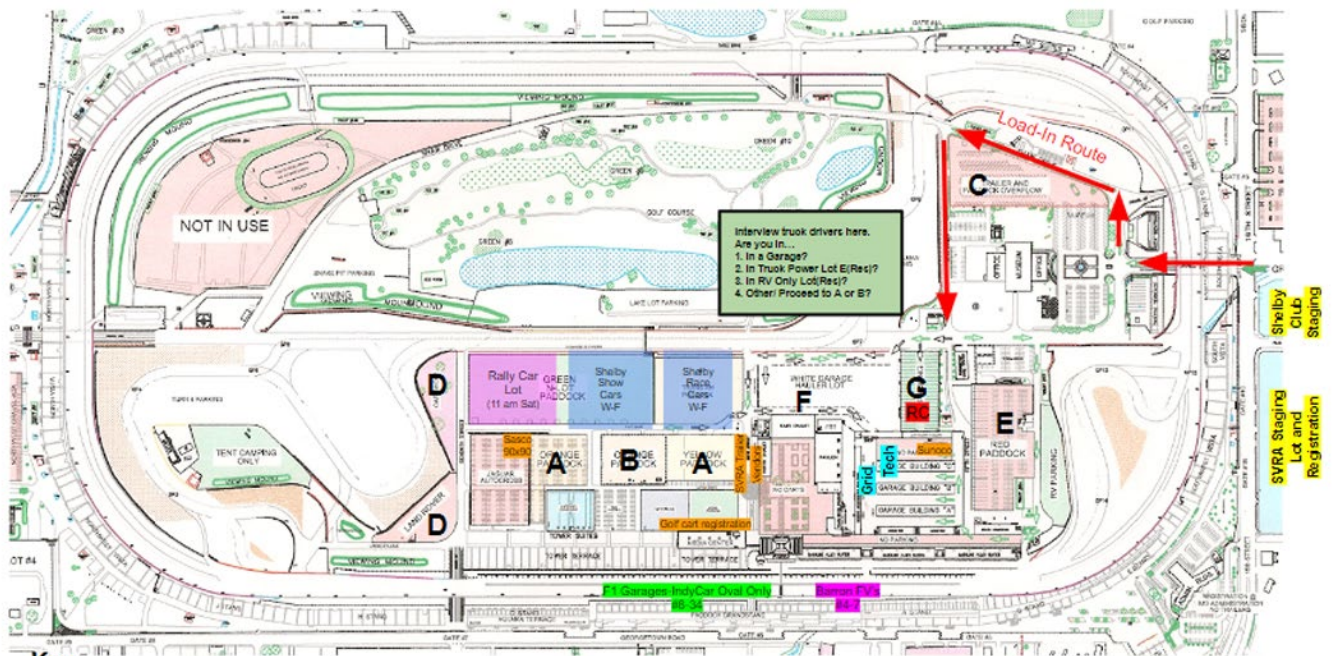
<b>Staging Location:</b>	Polco/16 <sup>th</sup> Street Gravel Lot – take note of SVRA and Shelby Club designated lanes
<b>Staging Hours:</b>	Wednesday, June 15: Shelby Club: 8:00 am   SVRA: 9:00 pm
<b>Load In Begins:</b>	Wednesday, June 15: Shelby Club: 10:00 am   SVRA: 12:00 pm
<b>Load Out:</b>	All trailers must be moved to the Polco Staging Lot by Sunday, June 19 at 7 pm
<b>Garages:</b>	Competitor trailers will be parked in the adjacent transporter lot near the garage area. Trailers must be unloaded in these adjacent lots and moved to your assigned garage.
<b>Quiet Hours:</b>	No race engines between 8:00 pm and 7:00 am
<b>Cleanliness:</b>	It is the responsibility of each competitor and team to always keep their paddock free of debris. All teams are expected to present the best possible image to both the fans and to the track. No batteries or petroleum products in the trash cans. All tires must be removed from the facility when you leave.
<b>Personal Vehicles:</b>	No personal vehicles are allowed in the paddock unless you used it to tow your trailer and it fits in your allocated space. All street cars must be parked in designated "STREET CAR PARKING" areas. Those taking their tow vehicle in and out of the paddock, please use caution and observe all fire lanes.
<b>RVs:</b>	RVs will not be allowed in the paddock unless they are towing a trailer. A limited number of RV spots will be available for purchase via your registrar. Additional spaces are available through the American Legion Speedway Post 500 (across from Gate 6): <a href="https://www.speedwaylegionpost500.com/rv-parking">https://www.speedwaylegionpost500.com/rv-parking</a>

**COMPETITOR INFORMATION**

- Saturday Night Party:** Join us in the Pagoda Plaza on the evening of Saturday, June 18 for dinner and the Midtown Madmen. Each entry receives 2 tickets, additional are available for \$30 at registration; cash bar will be available.
- Camping:** Competitors will be allowed to camp in their designated paddock space. See above information about RVs and additional parking options. *Please note there will be no showers available in the paddock.*
- RV Services:** Service Sanitation: 800-909-5646
- Tire Service:** SASCO Sports: 434-822-7200 or [dave@sascosports.com](mailto:dave@sascosports.com)
- Truck Wash:** Mears Mobile Wash & Detail | 317-339-9274
- Nitrogen:** Indiana Oxygen | 800-325-7314 | [indystore@indianaoxygen.com](mailto:indystore@indianaoxygen.com)
- Event Pit Lane Access:** Must have a hot credential. Shorts are approved on Pit Lane for this event, except for during the enduro.
- Fuel:** Sunoco, the official racing fuel for SpeedTour events, will be at the back of the Gasoline Alley garages. Special orders or questions can be send to Jamie Deer: 317-339-8323 or [jdeer@brownsoilservice.com](mailto:jdeer@brownsoilservice.com)
- Fueling Hours:** Thu: 7:30am-5:00pm | Fri & Sat: 8:00am-5:00pm | Sun: 8:00am-1:00pm (subject to change)
- Spectator Information:** <https://www.indianapolismotorspeedway.com/events/vintage>

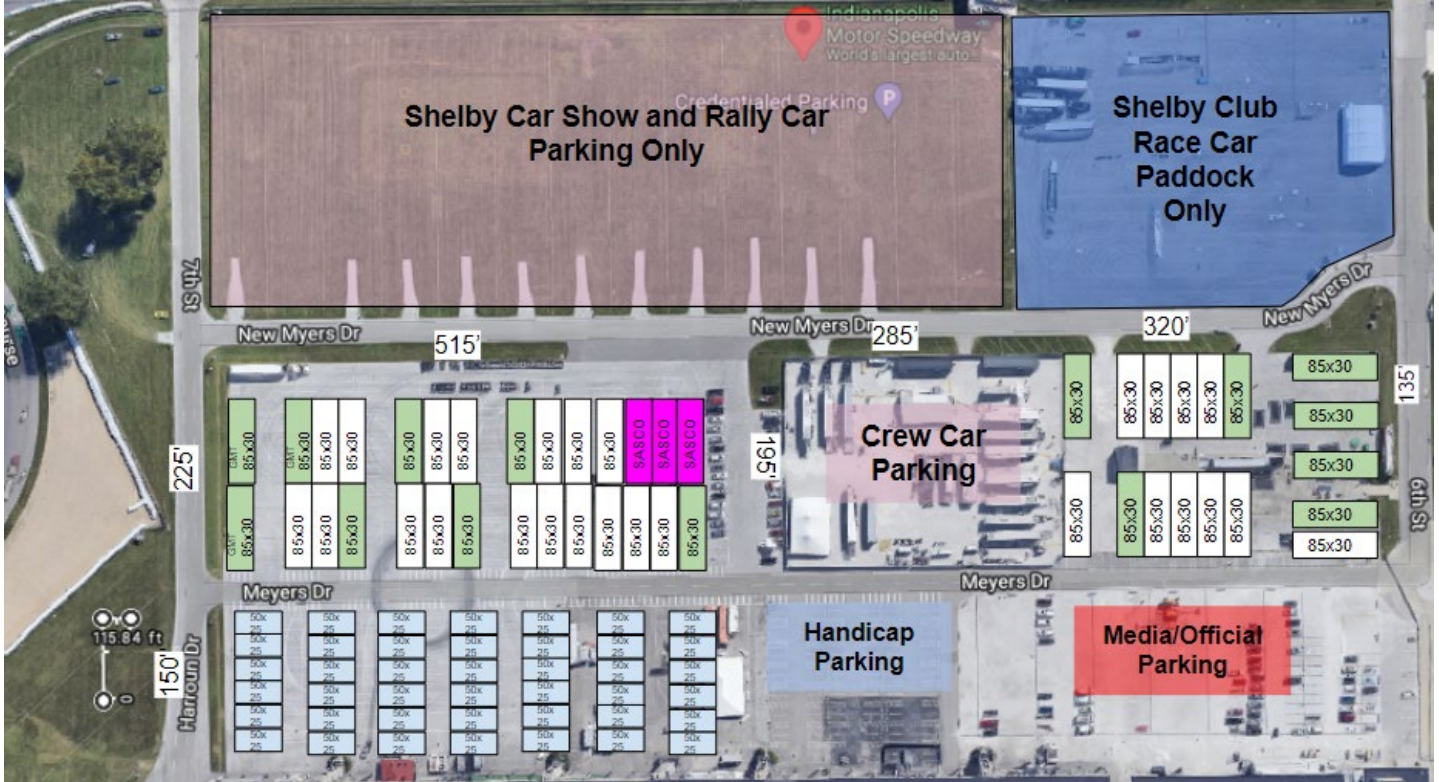
**MAPS**

**Facility Overview**

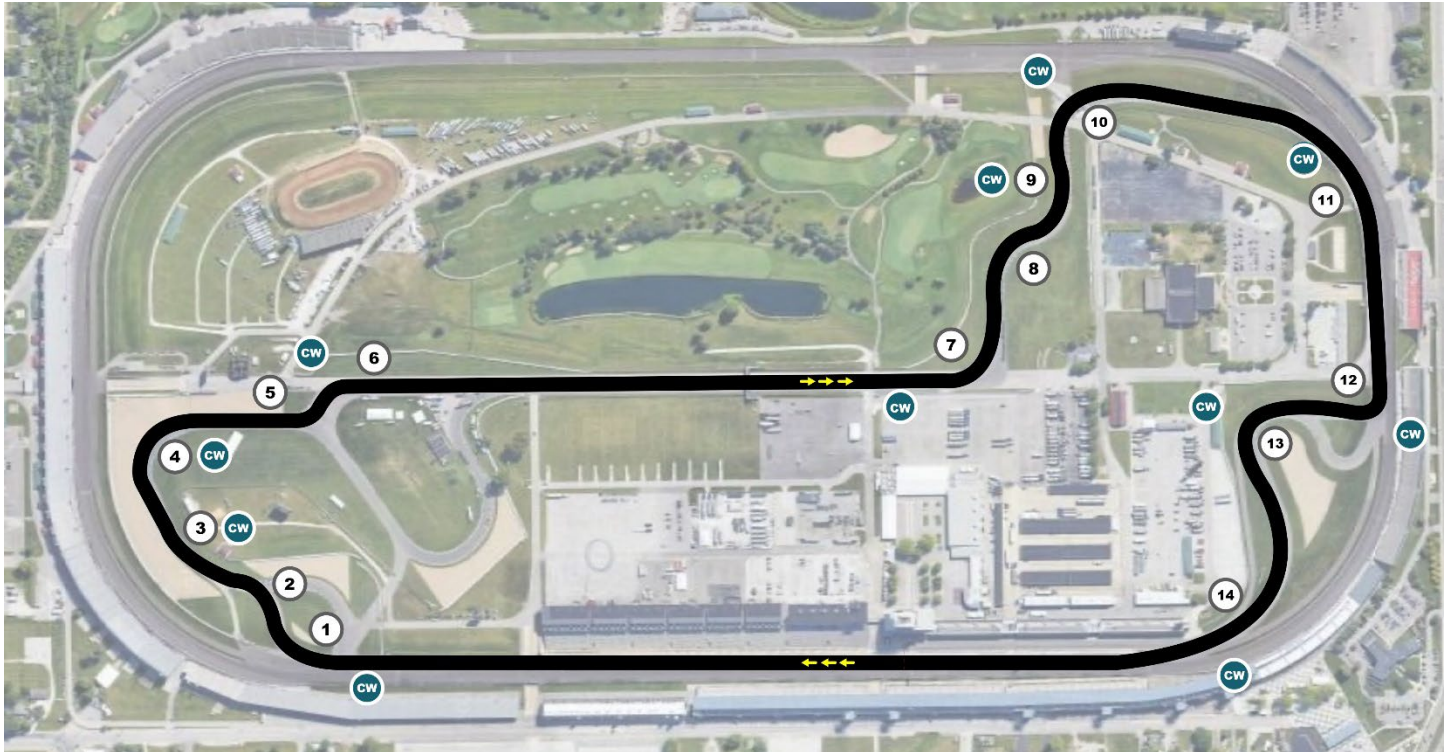


- Key**
- A-Paved Paddock
  - B-Crew Car Parking
  - C-Street Car Parking-Tentative(Shuttle Stop)
  - D-SVRA Hagerty Car Show
  - E-Tractor Trailers with Reserved Power
  - F-Garage Tenant Truck Parking(unload here)
  - G-RV Reserved Parking

Paddock Map



Track Map



### Travel Maps

The North Split Project on I-70 in Downtown Indy might impact your travel here is some more information about detours.

- Semis, toter homes and other large rigs coming in on I-70 from the east should take the I-465 detour South around the city and come in on Crawfordsville Road.
- Others with small trailers, motorhomes and street vehicles may come in on I-70 to downtown and do the following:
  - Exit onto I-65 toward Chicago
  - Take the 38th St exit and head west to High School Road.
  - Turn left, heading south on High School Road to Crawfordsville Rd.
  - Turn left on Crawfordsville Rd. to the Speedway



North Split Closure Detour Routes

