



#### **ORGANIZER INFORMATION**

**COO:** Michael Printup – [michael@parellamotorsports.com](mailto:michael@parellamotorsports.com)  
**Communications:** SVRA: Ashleigh Aungst – [ashleigh@a2bstrategiesllc.com](mailto:ashleigh@a2bstrategiesllc.com)  
Trans Am: Jessica Trippy – [jtrippy@gotransam.com](mailto:jtrippy@gotransam.com)  
**Media:** Pam Shatraw – [pam@svra.com](mailto:pam@svra.com)  
**Registration:** SVRA: Kathy Swinford – [kathy@svra.com](mailto:kathy@svra.com)  
Trans Am: Kelley Huxtable – [registration@gotransam.com](mailto:registration@gotransam.com)  
**Paddock:** SVRA: Alex Miller – [alex@svra.com](mailto:alex@svra.com)  
Trans Am: Jeff Luckritz – [paddock@gotransam.com](mailto:paddock@gotransam.com)  
**Series Admin:** SVRA: Alex Miller – [alex@svra.com](mailto:alex@svra.com)  
Trans Am: Terry Ozment – [tozment@gotransam.com](mailto:tozment@gotransam.com)

#### **CIRCUIT DETAILS**

**Circuit Information:** Watkins Glen International | 2790 County Route 16, Watkins Glen, NY 14891  
[www.theglen.com](http://www.theglen.com) | 607-535-2486

**Length of Circuit/Turns:** 3.4 miles/11-turn road course

**Race Direction:** Clockwise

**Pole Position:** Drivers right

**Start & Finish Line:** Pit Straight

**Pit Lane:** Speed limit is 40 mph. Determined by Pit Lane Speed Limit judges located in pit lane. Shorts are allowed in the pit lane except during the Enduro.

**Registration:** **All participants** must go to Registration, located at the corner of Old Bronson Hill Road and County Route 16, before entering the facility.

**Grid Location:** Behind Pit Terrace grandstands

**Race Control Location:** Race Control Tower

**Timing & Scoring:** Race Control Tower

**Stewards' Office:** SVRA: Series Trailer  
Trans Am: Series Trailer

**Meeting Locations:** SVRA: Great Room, 2<sup>nd</sup> Floor Media Center  
Trans Am: Great Room, 2<sup>nd</sup> Floor Media Center

**Podium Ceremony:** Victory Circle along Pit Lane

**Black Flag Locations:** Start/Finish and Turn 7B

**Track Security:** Main Security: 607-481-0676

**Shipping Address:** Attn: Team Name  
Watkins Glen International  
2790 County Route 16  
Watkins Glen, NY 14891

**Package Retrieval:** Packages can be picked up at the Operations Maintenance Center just off Seagraves Road in the Paddock.

**Facility Restrictions:** <https://www.theglen.com/fanguide/>

**Track Emergency:** Infield Care Center: 607-535-3452  
After Hours: 607-535-8200 or 911

**Nearest Hospital:** Schuyler Hospital, 220 Steuben St, Montour Falls, NY 14865; 607-535-7121 (ED: 607-535-9482)

**Trauma Hospitals:** Robert Packer Hospital, 1 Guthrie Square, Sayre, PA 18840; 570-888-6666 (ED: 570-887-4225)

**Burn Center:** SUNY University Hospital - Upstate Medical University Hospital, 750 East Adams Street, Syracuse, NY 13210, 315-464-5540 (ED: 315-464-5612)



**PADDOCK INFORMATION**

**Staging Location:** Enter Gate 2 or 3 off Hwy 16. Refer to the WGI Staging Map (below) for areas within Lots 2 & 3 for staging.

**Staging Hours:**  
 SVRA: Begins Tuesday, August 20<sup>th</sup> at 12:00 pm  
 Trans Am: Begins Wednesday, August 21<sup>st</sup> at 8:00 am

**Load In Begins:**  
**SVRA/IGT: Wednesday, August 21st**  
 2:00 pm - Garage Tenants (Gate 2) (See WGI Staging Map below)  
 3:00 pm – 6:00 pm- All other SVRA and IGT Old Bronson Hill Rd across from Registration

**Trans Am: Wednesday, August 21st**  
 3:00 pm – 4:00 pm Garage tenants (Gate 2) (See WGI Staging Map below)  
 4:00 pm – 6:00 pm TA2 Class (Gate 2) (See WGI Staging Map below)

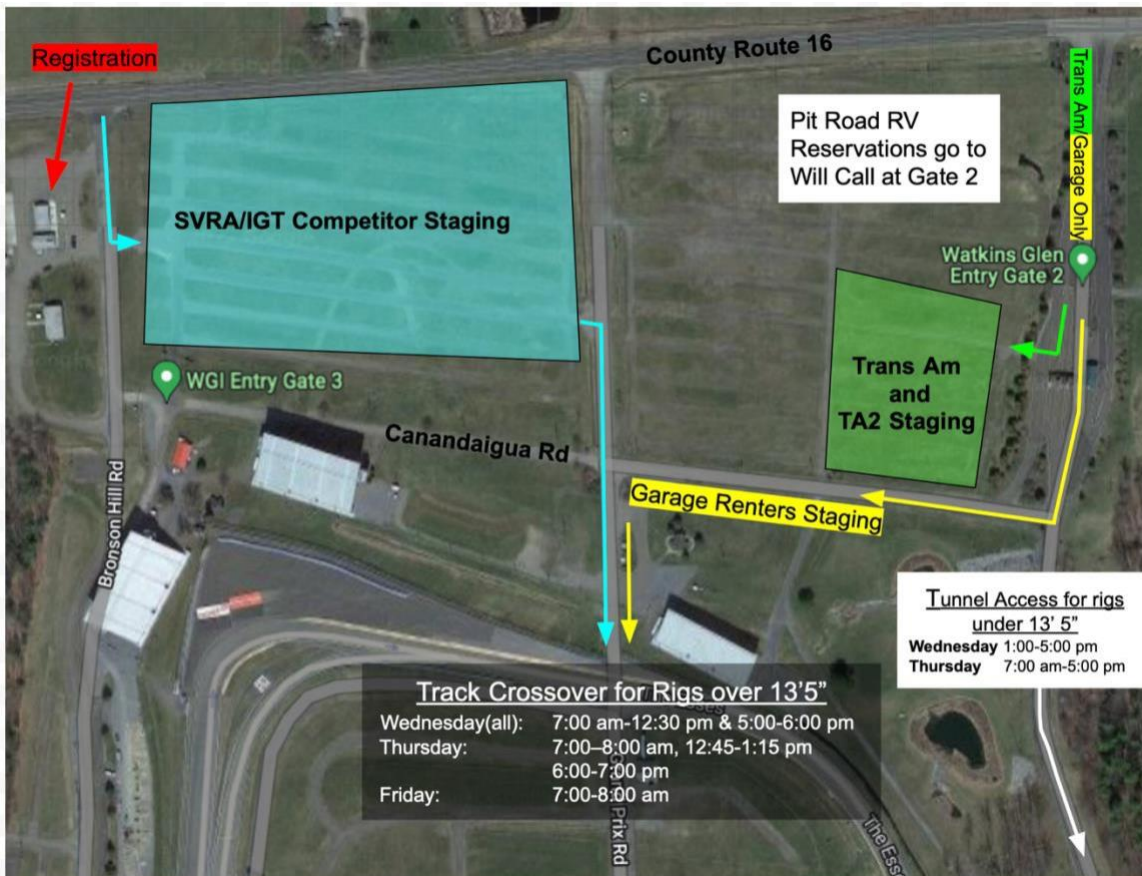
**Thursday, August 22nd**  
 7:00 am for remaining TA2 teams (Gate 2) (See WGI Staging Map below)

**Friday, August 23<sup>rd</sup>**  
 6:30 pm – 7:30 pm for TA/ GT Classes (Gate 2) (See WGI Staging Map below)

**Saturday, August 24<sup>th</sup>**  
 7:00 am -8:00 am remaining TA/GT Classes (Gate 2) (See WGI Staging Map below)

*Reminder - \*\* EVERYONE must come to Registration \*\**

**WGI Staging Map**



**Load Out:** Must be out of paddock on Sunday, August 25th by 6:30 p.m. Trailers can be staged in Lot 3 across from Registration through Tuesday for those going to CTMP the following weekend.

**Garages:** Please contact your registrar if you are interested in a garage. There is a waiting list.

**Quiet Hours:** No race engines between 10:00 pm and 7:00 am.

**Cleanliness:** It is the responsibility of each competitor and team to always keep their paddock free of debris. All teams are expected to present the best possible image to both the fans and to the track.

**PADDOCK INFORMATION (continued):**

**Personal Vehicles:** No personal vehicles are allowed in the paddock unless you used it to tow your trailer. All street cars must be parked in designated “STREET CAR/CREW PARKING” area. See map below for exact location. Those taking their tow vehicle in and out of the paddock, please use caution and observe all fire lanes.



**RVs:** RVs will not be allowed in the paddock unless they are towing a trailer. RV spots are available for purchase through WGI by contacting Cyndy Burrows: 607-535-3405 or [caburrows@theglen.com](mailto:caburrows@theglen.com). Please identify yourself as a driver or team wanting to reserve a Pit Road RV space.

**RV Services:** Onsite Services (585-233-8143). Service Route starts at 9am daily

**Waste Disposal:** Located near the track’s gas pumps

**COMPETITOR INFORMATION**

**Truck Wash:** TBD

**Nitrogen:** Airgas: [motorsports@airgas.com](mailto:motorsports@airgas.com) or 800-367-4273

**Electrical** Generator power may be rented though Watkins Glen International – Deb Yaeger (607-535-3309)

**Personal Golf Carts:** If you are planning on leaving the paddock with your cart, you must have the Golf Cart Permit from WGI which requires additional insurance. Certificate of Insurance needs can be viewed: [HERE](#) Submit the forms (page 2 & 3) to Jessica Cramer at [jcramer@theglen.com](mailto:jcramer@theglen.com) or call 607-535-3311.  
Event insurance covers personal and rental golf carts ONLY in the paddock

**Golf Cart Insurance:** Required for all rental carts, plus personal carts leaving the paddock.

**Golf Cart Rentals:** Empire Golf Carts – Paul Pickney – phone: 315-730-1110  
**If you reserved with the prior company, please call the number above to reserve again.**

**Scooters/Bikes:** All pit bikes, stick scooters, bikes that leave the paddock, must have a sticker.

**Event Pit Lane Access:** Must have a hot credential.

**Concessions:** Various locations will be available beginning Wednesday through Sunday for breakfast, lunch, and dinner.

**Pets:** Pets are allowed in the campground area. Pets must be kept on a 6’ leash at all times. Owners must clean up after their pets.



**COMPETITOR INFORMATION (Continued):**

- Fuel:** Sunoco, the official racing fuel for SpeedTour events, will be available on site. Fuels available at the pumps: 93, GT 100, 110 and 112 leaded, Supreme, and Standard; 260 GTX must be pre-ordered in drums using the form linked: [HERE](#). To order drums or for any questions, please contact Bruce at Insinger Performance: 570- 928-7300 or [bruce@insingerperformance.com](mailto:bruce@insingerperformance.com)
- Track Walk:** Track walks will be available Thursday and Friday evenings after track activity has completed. No wheels will be allowed, walking only. Listen to the PA for additional information.
- Live Stream:** The Watkins Glen SpeedTour will be live streamed and available for FREE on social media and online at the [SpeedTour.TV](http://SpeedTour.TV) website. Streams of the SVRA events will be available on SVRA's [Facebook](#) and [YouTube](#) pages, while Trans Am events will be available on the Trans Am [Facebook](#) or [YouTube](#) page. In addition, the full schedule (including IGT events) can be watched on [SpeedTour.TV](http://SpeedTour.TV) or [YouTube.com/SpeedTourTV](https://YouTube.com/SpeedTourTV). A full streaming schedule will be available closer to the event.

**TRACK MAP**

