



ORGANIZER INFORMATION

COO: Michael Printup – michael@parellamotorsports.com
Communications: SVRA: Ashleigh Aungst – ashleigh@a2bstrategiesllc.com
Trans Am: Jessica Trippy – jtrippy@gotransam.com
Media: Pam Shatraw – pam@svra.com
Registration: SVRA: Kathy Swinford – kathy@svra.com
Trans Am: Kelley Huxtable – registration@gotransam.com
Paddock: SVRA: Alex Miller – alex@svra.com
Trans Am: Jeff Luckritz – paddock@gotransam.com
Series Admin: SVRA: Alex Miller – alex@svra.com
Trans Am: Terry Ozment – tozment@gotransam.com

CIRCUIT DETAILS

Circuit Information: Watkins Glen International | 2790 County Route 16, Watkins Glen, NY 14891
www.theglen.com | 607-535-2486

Length of Circuit/Turns: 3.4 miles/11-turn road course

Race Direction: Clockwise

Pole Position: Drivers right

Start & Finish Line: Pit Straight

Pit Lane: Speed limit is 40 mph. Determined by Pit Lane Speed Limit judges located in pit lane. Shorts are allowed in the pit lane except during the Enduro.

Registration: **All participants** must go to Registration, located at the corner of Old Bronson Hill Road and County Route 16, before entering the facility.

Grid Location: Behind Pit Terrace grandstands

Race Control Location: Race Control Tower

Timing & Scoring: Race Control Tower

Stewards' Office: SVRA: Series Trailer
Trans Am: Series Trailer

Meeting Locations: SVRA: Great Room, 2nd Floor Media Center
Trans Am: Great Room, 2nd Floor Media Center

Podium Ceremony: Victory Circle along Pit Lane

Black Flag Locations: Start/Finish and Turn 7B

Track Security: Main Security: 607-481-0676

Shipping Address: Attn: Team Name
Watkins Glen International
2790 County Route 16
Watkins Glen, NY 14891

Package Retrieval: Packages can be picked up at the Operations Maintenance Center just off Seagraves Road in the Paddock.

Facility Restrictions: <https://www.theglen.com/fanguide/>

Track Emergency: Infield Care Center: 607-535-3452
After Hours: 607-535-8200 or 911

Nearest Hospital: Schuyler Hospital, 220 Steuben St, Montour Falls, NY 14865; 607-535-7121 (ED: 607-535-9482)

Trauma Hospitals: Robert Packer Hospital, 1 Guthrie Square, Sayre, PA 18840; 570-888-6666 (ED: 570-887-4225)

Burn Center: SUNY University Hospital - Upstate Medical University Hospital, 750 East Adams Street, Syracuse, NY 13210, 315-464-5540 (ED: 315-464-5612)

PADDOCK INFORMATION

Staging Location: Enter Gate 2 or 3 off Hwy 16. Refer to the WGI Staging Map (below) for areas within Lots 2 & 3 for staging.

Staging Hours:
 SVRA: Begins Tuesday, August 20th at 12:00 pm
 Trans Am: Begins Wednesday, August 21st at 8:00 am

Load In Begins:
SVRA/IGT: Wednesday, August 21st
 2:00 pm - Garage Tenants (Gate 2) (See WGI Staging Map below)
 3:00 pm – 6:00 pm- All other SVRA and IGT Old Bronson Hill Rd across from Registration

Trans Am: Wednesday, August 21st
 3:00 pm – 4:00 pm Garage tenants (Gate 2) (See WGI Staging Map below)
 4:00 pm – 6:00 pm TA2 Class (Gate 2) (See WGI Staging Map below)

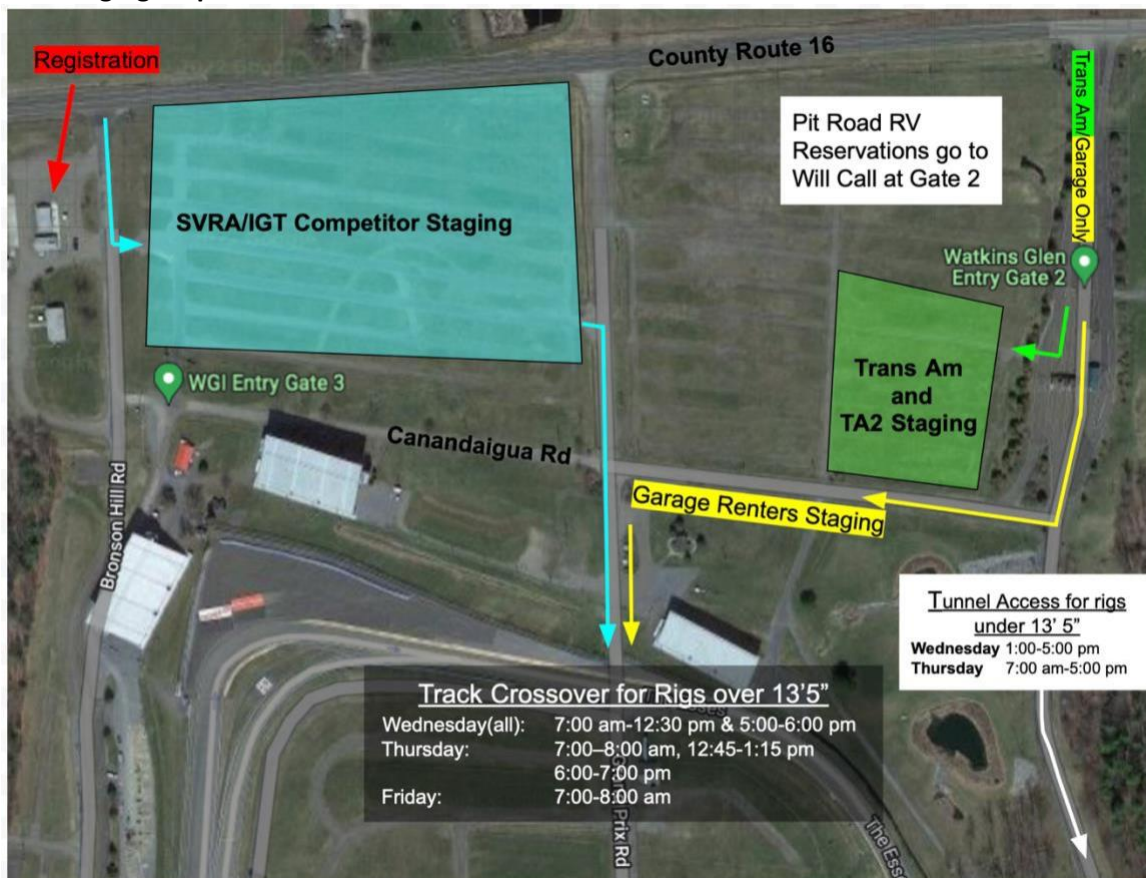
Thursday, August 22nd
 7:00 am for remaining TA2 teams (Gate 2) (See WGI Staging Map below)

Friday, August 23rd
 6:30 pm – 7:30 pm for TA/ GT Classes (Gate 2) (See WGI Staging Map below)

Saturday, August 24th
 7:00 am -8:00 am remaining TA/GT Classes (Gate 2) (See WGI Staging Map below)

*Reminder - ** EVERYONE must come to Registration ***

WGI Staging Map



Load Out: Must be out of paddock on Sunday, August 25th by 6:30 p.m. Trailers can be staged in Lot 3 across from Registration through Tuesday for those going to CTMP the following weekend.

Garages: Please contact your registrar if you are interested in a garage. There is a waiting list.

Quiet Hours: No race engines between 10:00 pm and 7:00 am.

Cleanliness: It is the responsibility of each competitor and team to always keep their paddock free of debris. All teams are expected to present the best possible image to both the fans and to the track.

PADDOCK INFORMATION (continued):

Personal Vehicles: No personal vehicles are allowed in the paddock unless you used it to tow your trailer. All street cars must be parked in designated “STREET CAR/CREW PARKING” area. See map below for exact location. Those taking their tow vehicle in and out of the paddock, please use caution and observe all fire lanes.



RVs: RVs will not be allowed in the paddock unless they are towing a trailer. RV spots are available for purchase through WGI by contacting Cyndy Burrows: 607-535-3405 or caburrows@theglen.com. Please identify yourself as a driver or team wanting to reserve a Pit Road RV space.

RV Services: Onsite Services (585-233-8143). Service Route starts at 9am daily

Waste Disposal: Located near the track’s gas pumps

COMPETITOR INFORMATION

Truck Wash: TBD

Nitrogen: Airgas: motorsports@airgas.com or 800-367-4273

Electrical Generator power may be rented though Watkins Glen International – Deb Yaeger (607-535-3309)

Personal Golf Carts: If you are planning on leaving the paddock with your cart, you must have the Golf Cart Permit from WGI which requires additional insurance. Certificate of Insurance needs can be viewed: [HERE](#) Submit the forms (page 2 & 3) to Jessica Cramer at jcramer@theglen.com or call 607-535-3311. Event insurance covers personal and rental golf carts ONLY in the paddock

Golf Cart Insurance: Required for all rental carts, plus personal carts leaving the paddock.

Golf Cart Rentals: **United Rental** – Brian Sheflin – phone: 585-201-9144
If you reserved with the prior company, please call the number above to reserve again.

Scooters/Bikes: All pit bikes, stick scooters, bikes that leave the paddock, must have a sticker.

Event Pit Lane Access: Must have a hot credential.

Concessions: Various locations will be available beginning Wednesday through Sunday for breakfast, lunch, and dinner.

Pets: Pets are allowed in the campground area. Pets must be kept on a 6’ leash at all times. Owners must clean up after their pets.



COMPETITOR INFORMATION (Continued):

- Fuel:** Sunoco, the official racing fuel for SpeedTour events, will be available on site. Fuels available at the pumps: 93, GT 100, 110 and 112 leaded, Supreme, and Standard; 260 GTX must be pre-ordered in drums using the form linked: [HERE](#). To order drums or for any questions, please contact Bruce at Insinger Performance: 570- 928-7300 or bruce@insingerperformance.com
- Track Walk:** Track walks will be available Thursday and Friday evenings after track activity has completed. No wheels will be allowed, walking only. Listen to the PA for additional information.
- Live Stream:** The Watkins Glen SpeedTour will be live streamed and available for FREE on social media and online at the SpeedTour.TV website. Streams of the SVRA events will be available on SVRA's [Facebook](#) and [YouTube](#) pages, while Trans Am events will be available on the Trans Am [Facebook](#) or [YouTube](#) page. In addition, the full schedule (including IGT events) can be watched on SpeedTour.TV or YouTube.com/SpeedTourTV. A full streaming schedule will be available closer to the event.

TRACK MAP

