



# SVRA Supplemental Tire Regulations

(Not for Gold Medallion Classes)

Revised 5/2025

**Wheel diameter** must be as originally fitted unless permitted in (the Spec Sheets).

**Tires must be mounted following the manufacturers specification for wheel width.**

**Bodywork may not be modified beyond period specifications to accommodate approved tires.**

Since tires are a consumable item, SVRA requires tires that are currently available and are of a reasonable age. There is no doubt that modern tire compounds and construction are vastly improved from what was available to competitors when our cars were originally raced.

The intent of these rules is to specify tires that are a reasonable compromise between the tires raced with during the period and what is currently available. Availability in sufficient sizes to maintain equitable tire performance within the Group and Class structure is of primary importance. We are looking for an appropriate level of dry grip for all the cars in a group, to avoid overloading suspension components.

Tires are evaluated by looking at their aspect ratio, tread pattern, carcass design and wear rating. **Some tire sizes/brands are acceptable based on true tire diameter and cross-section regardless of the listed aspect ratio.**

Some tires listed have been discontinued. These "Legacy" tires remain on the list as long as the age of the existing stock /sizes remain safe for racing use.

## Group 1 - Molded Treaded Tires

**Minimum aspect ratio of 60**, except as listed on the right, tread depth—no less than 2/32" remaining, at all times, over **75%** of the tire.

**Note:** Bodywork may **NOT** be modified beyond period specifications to accommodate listed tires.

Wheels may be of an alternate material but must be of period design. They must be the correct diameter and width as specified within the Make and Model Regulations.

### Approved Tires:

**Avon Racing:** 5.0/22-13, A29 14297 ACB9 only, A46 17680.  
6.0/22-13, A29 514 14198 ACB9 only, (ACB10 not permitted), CR6ZZ

**Goodyear Eagle:** 5.00/15 G12A

**American Racing:** 18/6.0-10 GT

**Hoosier:** 5.0-15

Vintage TD, Speedster

19.0x5.0-10, 20.5x6.0-13, 22.5x6.0-13TDR

Vintage FF tires

Any Treaded, DOT approved Tires with a UTQG of 100 or greater with appropriate Speed Rating and a minimum Aspect Ratio of 60

**For Toyo RA1's and Nitto NT01's, please see page 6 of this document**

## Group 2 - Molded Treaded Tires

As listed on right or in the latest Monoposto Racing Rules and Regulations

<http://www.monoposto.com/>

Shaving or reducing tread depth of tire by any means other than normal on track driving is prohibited.

### Approved Tires:

#### FB:

**All Monoposto approved tires**

**Hoosier: 21.0x9.0-13 R35B, 23.0x12.0-13 R35B**

#### F1, F2, F3, FSV:

**Dunlop:** L, M, Post Historic CR65 and CR82

**Avon: All-Weather H-003—H009**

Grooved slicks that meet the Monoposto Racing and SVRA approved tread standard. A template is available. It is the driver's responsibility to ensure that all grooved slicks meet the approved standard.

**Formula Jr:** Dunlop L-204 Hard Compound. With other tires will be run as Formula C.

**Formula Vee:** Treaded tires per Monoposto Racing Rules.

#### (FF, CF, PCF)

**Tires:** for all classes (Wet or Dry)

**Toyo Proxes R888, 185/60R/13**

**Toyo Proxes R888, 205/60R/13**

**Hoosier 135/545-13VFF**

**Hoosier 165/580-13VFF**

**Avon 5.0/22.0-13 A49 17680, A29 14297**

**Avon 6.5/23.0-13 A49 17681, A29 14298**

(A29 compounds no longer imported, but still legal.)

~~Dunlop 165/580-13 CR82 9092 Formula Ford~~

~~Dunlop 135/545-13 CR82 9092 Formula Ford (Both no longer available)~~

## Group 3 - Molded Treaded Tires

**Minimum aspect ratio of 60**, except as listed on the right, tread depth—no less than 2/32" remaining, at all times, over **75%** of the tire.

**Note:** Bodywork may **NOT** be modified beyond period specifications to accommodate listed tires.

**Note:** Please refer to the "Group 3 Description and Class List" for **Porsche 356** tire limitations and requirements.

**For Toyo RA1's and Nitto NT01's, please see page 6 of this document**

### Approved Tires:

**Avon Racing:** 5.0/22-13, & 6.0/22-13, 6.5/23-13 ACB9 (ACB10 not permitted)  
185/70-14 (CR6), CR6ZZ, (A25 FF not permitted)

**Dunlop:** All "L-series, up to 5.50M-13, 14, 15;

**Goodyear Eagle:** 5.00/15 G12A

**Hoosier:** TD TDR and Speedster

22.0x6.0-13, 23.0x6.5-14TDR, 135/545-13 & 165/580-13VFF

Any Treaded, DOT approved Tires with a UTQG of 100 or greater with appropriate Speed Rating and a minimum Aspect Ratio of 60

Wheels may be of an alternate material but must be of period design. They must be the correct diameter and width as specified within the Make and Model Regulations.

Tires may not extend beyond the fender opening.

<p><b>Group 4 - Molded Treaded Tires</b></p> <p>Tires may not extend beyond the fender opening at the highest point of the tire.</p>	<p><b>Approved Tires:</b></p> <p><b>Modified Category:</b>  <b>Dunlop L-series</b> (204 compound).  <b>Blockley</b>  <b>Continental</b>  <b>Avon CR6ZZ</b></p> <p><b>Production Category:</b>  All listed above plus: <b>Avon CR6ZZ, Hoosier Vintage TD, TDR. Goodyear Blue Streak Sports Car Specials</b></p>																																																																																																																																																																															
<p><b>Group 5 - Treaded Tires &amp; Slicks</b></p> <p>While exact size and aspect ratio are not specified, the entrant must ensure that tire choice is appropriate for the car during the eligibility period.</p>	<p>Treaded racing tires or approved street tires with a suitable speed rating. Grooved <b>bias-ply slicks</b> with SVRA approved tread patterns.</p> <p>The approved tread patterns are:  <b>Dunlop:</b> Dunlop: CR-65 and CR-82 tread patterns  <b>Avon:</b> All-weather "H-Pattern", CR6ZZ radial.  <b>Goodyear:</b> G-12A and G7</p> <p>It is the driver's responsibility to ensure any grooved slicks meet the approved standard. Sports 2000 cars - see Rules published by the Vintage S2 N.A. for Spec Tires.</p>																																																																																																																																																																															
<p><b>Group 6 - Molded Treaded Tires</b></p> <p><b>Wheels and Tires:</b></p> <p>Tires may not extend beyond the fender opening.</p> <p><b>Specifically Prohibited for Group 6:</b></p> <p><b>Any tire not listed in the Approved Tire list</b></p> <p>Wheels may be of an alternate material but must be of period design. They must be the correct diameter and width as specified within the Make and Model Regulations.</p> <p><b>Approved DOT Tires:</b></p> <p>Any Treaded, DOT approved Tires with a UTQG of 100 or greater with</p>	<p><b>Approved Tires:</b> List per Make and Model is Listed below:</p> <table border="1"> <thead> <tr> <th>MAKE</th> <th>MODEL</th> <th>PRODUCTION PERIOD</th> <th>CLASS</th> <th>TIRE GROUP</th> </tr> </thead> <tbody> <tr><td>AC Cobra</td><td>260/289</td><td></td><td>( BP )</td><td>a</td></tr> <tr><td>AC Cobra</td><td>FIA 289</td><td></td><td>( AP )</td><td>a, b</td></tr> <tr><td>AC Cobra</td><td>427</td><td></td><td>( AP )</td><td>a, b, c</td></tr> <tr><td>AMX Sports Coupe</td><td>290, 343, 360</td><td></td><td>( BP )</td><td>a, b</td></tr> <tr><td>AMC</td><td>Javelin</td><td>1968-69</td><td>(TAS)</td><td>a, b</td></tr> <tr><td>AMC</td><td>Javelin</td><td>1970-72</td><td>(TAS)</td><td>a, b, c</td></tr> <tr><td>Aston Martin</td><td>DB4, DB5</td><td></td><td>( BP )</td><td>a.</td></tr> <tr><td>Chevrolet</td><td>Corvette 396, 427</td><td>1965-67</td><td>( AP )</td><td>a, b, c, d</td></tr> <tr><td>Chevrolet</td><td>Corvette 427, 454</td><td>1968-72</td><td>( AP )</td><td>a, b, c, d</td></tr> <tr><td>Chevrolet</td><td>Corvette 327</td><td>1963-67</td><td>( BP )</td><td>a, b</td></tr> <tr><td>Chevrolet</td><td>Corvette 350</td><td>1968-72</td><td>( AP )</td><td>a, b, c, d</td></tr> <tr><td>Chevrolet</td><td>Corvette 350</td><td>1968-72</td><td>( BP )</td><td>a, b, c</td></tr> <tr><td>Chevrolet</td><td>Camaro</td><td>1967-69</td><td>( TAS )</td><td>a, b</td></tr> <tr><td>Chevrolet</td><td>Camaro</td><td>1970-72</td><td>( TAS )</td><td>a, b, c</td></tr> <tr><td>Dodge</td><td>Dart</td><td></td><td>( TAS )</td><td>a, b</td></tr> <tr><td>Dodge</td><td>Challenger</td><td>1968-72</td><td>( TAS )</td><td>a, b, c</td></tr> <tr><td>Ferrari</td><td>250/275 GT, GTO</td><td></td><td>( BP )</td><td>a</td></tr> <tr><td>Ferrari</td><td>365 GTB/4, 375</td><td></td><td>( BP )</td><td>a, b</td></tr> <tr><td>Ford</td><td>Falcon</td><td></td><td>( TAS )</td><td>a, b</td></tr> <tr><td>Ford</td><td>Mustang</td><td>1964-67</td><td>( TAS )</td><td>a, b</td></tr> <tr><td>Ford</td><td>Mustang</td><td>1968-69</td><td>( TAS )</td><td>a, b</td></tr> <tr><td>Ford</td><td>Mustang BOSS 302</td><td>1970-72</td><td>( TAS )</td><td>a, b, c</td></tr> <tr><td>Ford</td><td>Mustang BOSS 429</td><td>1970-72</td><td>( AP )</td><td>a, b, c</td></tr> <tr><td>Griffith</td><td>200/400</td><td></td><td>( AP )</td><td>a, b</td></tr> <tr><td>Jaguar</td><td>XKE</td><td>1962 +</td><td>( AP )</td><td>a, b</td></tr> <tr><td>Jaguar</td><td>XKE</td><td>1962 +</td><td>( BP )</td><td>a</td></tr> <tr><td>Mercury</td><td>Cougar</td><td>1966-67</td><td>( TAS )</td><td>a, b</td></tr> <tr><td>Mercury</td><td>Cougar</td><td>1968-69</td><td>( TAS )</td><td>a, b, c</td></tr> <tr><td>Plymouth</td><td>Valiant, Barracuda</td><td>1964-67</td><td>( TAS )</td><td>a, b</td></tr> <tr><td>Plymouth</td><td>Barracuda</td><td>1968-72</td><td>( TAS )</td><td>a, b, c</td></tr> <tr><td>Pontiac</td><td>Firebird</td><td>1967-69</td><td>( TAS )</td><td>a, b</td></tr> <tr><td>Pontiac</td><td>Firebird</td><td>1970-72</td><td>( TAS )</td><td>a, b, c</td></tr> <tr><td>Shelby</td><td>GT 350</td><td>1965-67</td><td>( TAS )</td><td>a, b</td></tr> <tr><td>Shelby</td><td>GT 500</td><td></td><td>( AP )</td><td>a, b, c</td></tr> </tbody> </table>	MAKE	MODEL	PRODUCTION PERIOD	CLASS	TIRE GROUP	AC Cobra	260/289		( BP )	a	AC Cobra	FIA 289		( AP )	a, b	AC Cobra	427		( AP )	a, b, c	AMX Sports Coupe	290, 343, 360		( BP )	a, b	AMC	Javelin	1968-69	(TAS)	a, b	AMC	Javelin	1970-72	(TAS)	a, b, c	Aston Martin	DB4, DB5		( BP )	a.	Chevrolet	Corvette 396, 427	1965-67	( AP )	a, b, c, d	Chevrolet	Corvette 427, 454	1968-72	( AP )	a, b, c, d	Chevrolet	Corvette 327	1963-67	( BP )	a, b	Chevrolet	Corvette 350	1968-72	( AP )	a, b, c, d	Chevrolet	Corvette 350	1968-72	( BP )	a, b, c	Chevrolet	Camaro	1967-69	( TAS )	a, b	Chevrolet	Camaro	1970-72	( TAS )	a, b, c	Dodge	Dart		( TAS )	a, b	Dodge	Challenger	1968-72	( TAS )	a, b, c	Ferrari	250/275 GT, GTO		( BP )	a	Ferrari	365 GTB/4, 375		( BP )	a, b	Ford	Falcon		( TAS )	a, b	Ford	Mustang	1964-67	( TAS )	a, b	Ford	Mustang	1968-69	( TAS )	a, b	Ford	Mustang BOSS 302	1970-72	( TAS )	a, b, c	Ford	Mustang BOSS 429	1970-72	( AP )	a, b, c	Griffith	200/400		( AP )	a, b	Jaguar	XKE	1962 +	( AP )	a, b	Jaguar	XKE	1962 +	( BP )	a	Mercury	Cougar	1966-67	( TAS )	a, b	Mercury	Cougar	1968-69	( TAS )	a, b, c	Plymouth	Valiant, Barracuda	1964-67	( TAS )	a, b	Plymouth	Barracuda	1968-72	( TAS )	a, b, c	Pontiac	Firebird	1967-69	( TAS )	a, b	Pontiac	Firebird	1970-72	( TAS )	a, b, c	Shelby	GT 350	1965-67	( TAS )	a, b	Shelby	GT 500		( AP )	a, b, c
MAKE	MODEL	PRODUCTION PERIOD	CLASS	TIRE GROUP																																																																																																																																																																												
AC Cobra	260/289		( BP )	a																																																																																																																																																																												
AC Cobra	FIA 289		( AP )	a, b																																																																																																																																																																												
AC Cobra	427		( AP )	a, b, c																																																																																																																																																																												
AMX Sports Coupe	290, 343, 360		( BP )	a, b																																																																																																																																																																												
AMC	Javelin	1968-69	(TAS)	a, b																																																																																																																																																																												
AMC	Javelin	1970-72	(TAS)	a, b, c																																																																																																																																																																												
Aston Martin	DB4, DB5		( BP )	a.																																																																																																																																																																												
Chevrolet	Corvette 396, 427	1965-67	( AP )	a, b, c, d																																																																																																																																																																												
Chevrolet	Corvette 427, 454	1968-72	( AP )	a, b, c, d																																																																																																																																																																												
Chevrolet	Corvette 327	1963-67	( BP )	a, b																																																																																																																																																																												
Chevrolet	Corvette 350	1968-72	( AP )	a, b, c, d																																																																																																																																																																												
Chevrolet	Corvette 350	1968-72	( BP )	a, b, c																																																																																																																																																																												
Chevrolet	Camaro	1967-69	( TAS )	a, b																																																																																																																																																																												
Chevrolet	Camaro	1970-72	( TAS )	a, b, c																																																																																																																																																																												
Dodge	Dart		( TAS )	a, b																																																																																																																																																																												
Dodge	Challenger	1968-72	( TAS )	a, b, c																																																																																																																																																																												
Ferrari	250/275 GT, GTO		( BP )	a																																																																																																																																																																												
Ferrari	365 GTB/4, 375		( BP )	a, b																																																																																																																																																																												
Ford	Falcon		( TAS )	a, b																																																																																																																																																																												
Ford	Mustang	1964-67	( TAS )	a, b																																																																																																																																																																												
Ford	Mustang	1968-69	( TAS )	a, b																																																																																																																																																																												
Ford	Mustang BOSS 302	1970-72	( TAS )	a, b, c																																																																																																																																																																												
Ford	Mustang BOSS 429	1970-72	( AP )	a, b, c																																																																																																																																																																												
Griffith	200/400		( AP )	a, b																																																																																																																																																																												
Jaguar	XKE	1962 +	( AP )	a, b																																																																																																																																																																												
Jaguar	XKE	1962 +	( BP )	a																																																																																																																																																																												
Mercury	Cougar	1966-67	( TAS )	a, b																																																																																																																																																																												
Mercury	Cougar	1968-69	( TAS )	a, b, c																																																																																																																																																																												
Plymouth	Valiant, Barracuda	1964-67	( TAS )	a, b																																																																																																																																																																												
Plymouth	Barracuda	1968-72	( TAS )	a, b, c																																																																																																																																																																												
Pontiac	Firebird	1967-69	( TAS )	a, b																																																																																																																																																																												
Pontiac	Firebird	1970-72	( TAS )	a, b, c																																																																																																																																																																												
Shelby	GT 350	1965-67	( TAS )	a, b																																																																																																																																																																												
Shelby	GT 500		( AP )	a, b, c																																																																																																																																																																												

<p>appropriate Speed Rating and a minimum Aspect Ratio of 60</p> <p><b>For Toyo RA1's and Nitto NT01's, please see page 6 of this document</b></p>	<p><b><u>Tire Group ( a ):</u></b>  <b>Dunlop</b> M Series  Special<b>Goodyear</b> 5.50 &amp; 6.00-15 Vintage S.C. Special  <b>Hoosier</b> 26.5/9.5-15 Street TDR/  <b>Hoosier</b> 24.0x7.0-15, 25.5x8.0 and 8.5-15 TDR</p> <p><b><u>Tire Group ( b ):</u></b>  <b>Goodyear</b> 7.00-15 Vintage S.C.  Special<b>Goodyear</b> 5.50 &amp; 6.00-15 Vintage S.C. Special  <b>Hoosier</b> 25.5/8.5-15 Street TDR/<b>S</b> (front only)</p> <p><b><u>Tire Group ( c ):</u></b>  <b>Goodyear</b> 8.00-15 Vintage Sports Car Special  <b>Goodyear</b> 600W-15  <b>Hoosier</b> 25.5/10.00-15, 27.5/11.00-15 TDR  26.5/11-15 TDR</p> <p><b><u>Tire Group ( d ):</u></b>  <b>Hoosier</b> 24.0x8.5-15 TDR  <b>Hoosier</b> 25.5/8.5-15 TDR/</p>
<p><b>Group 7</b></p>	<p><b>Approved Tires:</b></p> <p>Racing slicks and treaded racing tires.  Avon  Goodyear  Hoosier</p> <p>While exact size and aspect ratio are not specified, entrants must ensure that tire choice is appropriate for the car during the eligibility period.</p>
<p><b>Group 8 - Molded Treaded Tires</b></p> <p><b>Minimum aspect ratio of 45</b>, except certain car Make and Models, which have specific tire requirements listed in their Supplemental Regulations, tread depth—no less than 2/32” remaining, at all times, over <b>75%</b> of the tire.</p> <p>Wheels may be of an alternate material but must be of period design. They must be the correct diameter and width as specified within the Supplemental Regulations of the Make and Model.</p> <p>Tires may not extend beyond the fender opening.</p>	<p><b>Approved tires:</b></p> <p>There are no specific sizes listed because of the large diversity of Group 8 cars. All Group 8 cars must use similar sized tires to what was used in the day, which is pre 1973. Using oversized tires is unacceptable and when in question, SVRA’s determination shall be the final word.</p> <p><b>Avon:</b> ACB9, ACB10, CR6ZZ,  <b>Goodyear Eagle:</b> 5.50/15 G12 or G12A  <b>Hoosier:</b> <b>R 7</b>, TDR, VFF &amp; Speedster</p> <p><b>B Sedan and B Sedan Light cars are not eligible to use Hoosier R7. All other Group 8 classes are permitted Hoosier R7 as a tire choice.</b></p> <p>Any Treaded, DOT approved Tires with a UTQG of 100 or greater with appropriate Speed Rating and a minimum Aspect Ratio of 45</p> <p><del><b>Note: Group 8 must use approved full molded treaded tires, regardless of what specification tires a car may have competed with in a prior race series.</b></del></p> <p><b>For Toyo RA1's and Nitto NT01's, please see page 6 of this document</b></p>
<p><b>Group 9</b></p> <p>Monoposto Racing Rules and Regulations: monoposto.com</p>	<p><b>Approved tires:</b></p> <p>Avon  Goodyear  Hankook  Hoosier  Suitable and appropriate slicks.</p>

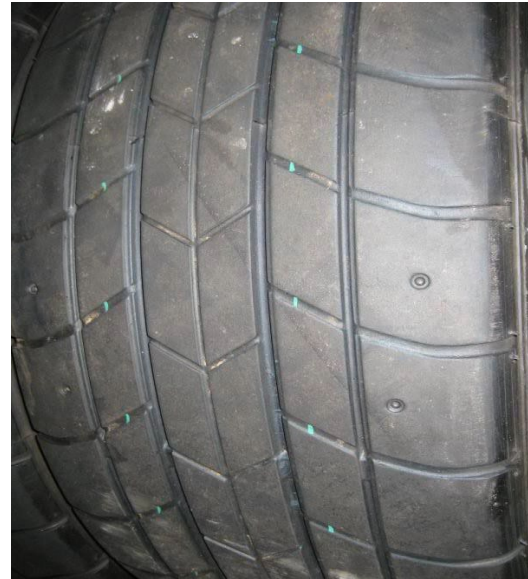
<p><b>Group 10</b></p> <p>Group 10 cars are expected to have only period-correct equipment and specifications.</p>	<p><b>Approved Tires:</b>  Avon  Hoosier  Michelin  Goodyear  Pirelli  Racing SLICKS. While exact size and aspect ratio are not specified, entrants must ensure that tire choice is appropriate for the car during the eligibility period.</p>
<p><b>Group 11</b></p> <p>Group 11 cars are expected to have only period-correct equipment and specifications.</p>	<p><b>Approved Tires:</b>  Avon  Goodyear  Hankook  Hoosier  Michelin  Pirelli  Racing SLICKS. While exact size and aspect ratio are not specified, entrants must ensure that tire choice is appropriate for the car during the eligibility period.</p>
<p><b>Group 12</b></p> <p>Tire sizes must be used as listed in your cars specific racing series.</p> <p>Wheels may be of an alternate material but must be of period design. They must be the correct diameter and width as specified within your cars specific racing series</p> <p>Tires may not extend beyond the fender opening at the highest point of the tire.</p>	<p>GTU, MP1-4 Approved Tires: Goodyear: DOT Radial, Hoosier: R7, Pirelli <u>Track day Tires</u></p> <p><b>Current CP, DP, EP, GT3, GT4:</b> May use current slick tires with the appropriate sizes  Goodyear  Hankook “Track Day”  Hoosier  Michelin  Pirelli  Any Treaded, DOT approved Tires with appropriate Speed Rating</p> <p>Cars that use tires sizes not available in the Hoosier R7 line may use racing slicks, these tires must have two full depth, parallel grooves installed 3” apart centered on the tire, these grooves may not be biased to one side or the other.</p> <hr/> <p><b>Note: Group 12 must use above listed approved tires, regardless of what specification tires may have used in a prior racing series.  Group 12, GT1, GTO and GTU may use appropriately sized slick tires.</b></p>

# Toyo RA-1 Wear Depths

Full Tread Depth



Legal minimum tread



# Nitto NT01 Wear Depths

Full tread depth



Legal minimum tread



These tires must maintain a minimum of 2/32 tread depth across the complete racing surface of the tire. If any part of the tread is less than 2/32 exiting the track the tire will be considered illegal, flat spots excluded.